

# Geechee Sailing Club

45<sup>th</sup> ANNUAL ST. PATRICK'S REGATTA  
MARCH 23 - 24, 2024



## SAILING INSTRUCTIONS

### 1. RULES

As stated in the NOR, this regatta is governed by the "rules" as defined in the *Racing Rules of Sailing (RRS)*.

### 2. NOTICES TO COMPETITORS

Notice to competitors will be announced at the Competitors' meeting conference call, emailed to registered boat representative after the call and hailed over the VHF hailing channel **72** prior to the scheduled start of the first race of the day.

### 3. CHANGES IN SAILING INSTRUCTIONS

- 3.1. Any change in the sailing instructions will be announced at the Competitors' meeting conference call, emailed to registered boat representative after the call and hailed over the VHF hailing channel **72** prior to the scheduled start of the first race of the day, except that any change in the schedule of races will be emailed to a boat representative by 9:00pm on the day before it will take effect.
- 3.2. Oral changes to the SIs may be given on the water by hail from the RC Signal boat in accordance with RRS 90.2(c). The RC Signal boat shall display code flag L with one sound and communicate the changes over the VHF hailing channel.

### 4. SIGNAL MADE ASHORE

- 4.1. Shore signals will be made over VHF hailing channel two hours prior to the scheduled warning signal of the first race of the day.
- 4.2. When AP is announced per SI 4.1, "One minute" is replaced with "not less than 60 minutes". This changes Race Signal AP.

### 5. SCHEDULE

Friday	7:00pm	Competitors' Meeting via Zoom Conference Call Meeting ID: 340 032 3155 Password: Savannah or dial (605) 313-4154 and use access code 464235.
Day 1	Noon	Fleet Racing First Warning Signal
Day 2	11:00am	Pursuit Racing First Warning Signal

### 6. Fleet Racing CLASS Flags

- 6.1. PHRF Class A – Spinnaker equipped boats – Yellow flag
- 6.2. PHRF Class B – Non spinnaker equipped boats – Pink flag
- 6.3. One Design Class: Rhodes 19 – Rhodes 19 flag
- 6.4. Additional Class flags may be assigned at the Competitors' Meeting and announced in accordance to SI 2

## 7. RACING AREA

The racing area will be the Wilmington River, Wassaw Sound, and the Atlantic Ocean.

## 8. COURSES

- 8.1. Predefined courses are defined in Appendix A.
- 8.2. Race Committee may set a tetrahedron to weather of the starting line. The Race Committee shall designate Green or Red with the course number when a weather mark is set. Boats shall first sail to the weather mark, round the mark to **starboard** if **Green**, **port** if **Red** and then sail the course. This mark only applies at the start; it does not apply at the finish.
- 8.3. Race Committee will hail the course over the hailing channel or post on the signal boat course board prior to the Warning single for the race.
- 8.4. For the Pursuit race, the course to be sailed and the calculated start times for all boats will be posted on the event web site by 9pm on Saturday.

## 9. MARKS

- 9.1. Start and Finish Pins will be Orange Hippity Hops. Rounding marks, if used, will be Orange or Yellow Tetrahedrons.
- 9.2. Government marks, other than rounding marks, shall be honored and passed on their required side.

## 10. STARTING

- 10.1. As a courtesy to competitors, Race Committee may announce the starting sequence over the VHF hailing channel.
- 10.2. Before the Warning Signal of the first race each day, boats shall check in by sailing past the Signal Boat hailing their sail number or hailing over VHF and be acknowledged by Race Committee.  
[DP]
- 10.3. The starting line will be between a staff displaying an orange flag on the Signal Boat and the starting mark.

## 11. THE PURSUIT START

- 11.1. The pursuit race is a reverse PHRF handicap starting order. The boat with the slowest rating shall start first and the boat with the fastest rating shall start last.
- 11.2. The race shall use GPS time synchronization. The start times for all boats shall be based on their PHRF Time on Distance as called out on the Regatta Network Pursuit Start Sheet for Geechee Sailing Club St. Patrick's Regatta.
- 11.3. Race Committee signals the starting sequence as follows (this changes RRS 26):
  - 11:00 Warning signal for all boats – Raise Geechee Burgee with one (1) sound
  - 11:01 Preparatory signal for the first boat to start – Signal flag "P" with one (1) sound
  - 11:02 Lower code flag "P" with a long sound
  - 11:03 Starting signal for the first boat to start – Lower Geechee Burgee with one (1) sound.Subsequent start time(s) for remaining boats – Briefly raise Geechee Burgee with one (1) sound.
- 11.4. The race committee may attempt to broadcast each upcoming start time on the VHF Hailing Channel. Failure of the race committee to announce a start time shall not be grounds for redress.

- 11.5. For the purposes of the definition of "racing," each boat's preparatory signal shall be four (4) minutes prior to their scheduled start time.
- 11.6. In the event a postponement is signaled on the water, Race Committee shall announce the revised start time on the VHF Hailing channel for the first boat before lowering the postponement flag. It is a boat's responsibility to calculate their new start time.

## **12. THE FINISH**

The finish line will be between a staff displaying a blue flag on a race committee boat and the finish mark.

## **13. PENALTY SYSTEM**

- 13.1. RRS Appendix V Alternative Penalties shall apply.
- 13.2. Propulsion is permitted for running aground as permitted by RRS 42.3(i).

## **14. TIME LIMITS**

14.1. The time limit for each PHRF/One Design races is two hours. Boats failing to finish within 45 minutes after the first boat in their fleet sails the course and finishes, and not subsequently retiring, penalized or given redress, will be scored Time Limit Expired (TLE) without a hearing. A boat scored TLE shall be scored points for the finishing place [one][two] more than the points scored by the last boat that finished within the Finishing Window. This changes RRS 35, A5.1, A5.2 and A10.

14.2. The Time Limit for the Pursuit Race is four hours.

## **15. RETIREMENT**

When possible, a retiring boat shall notify Race Committee over the VHF hailing channel. [DP]

## **16. PROTESTS**

- 16.1. Promptly after finishing or retiring, any boat intending to protest shall notify Race Committee. This adds to RRS 61.1(a).
- 16.2. The Protest Time Limit is 30 minutes after the Signal Boat docks and will be announced over the VHF hailing channel.
- 16.3. Protests can be emailed to [joleenkrasmussen@gmail.com](mailto:joleenkrasmussen@gmail.com) or texted to 919-369-5784.
- 16.4. Arbitration as described in US Sailing RRS Appendix T may be offered.
- 16.5. Protests will be heard in approximately the order of receipt as soon as possible.
- 16.6. Hearing Schedule will be announced over VHF hailing channel within 10 minutes after the Protest Time limit to inform competitors where and when there is a hearing.

## **17. SCORING**

17.1. Saturday PHRF/One design races will use Time on Time handicapping. Each boat's elapsed time will be multiplied by a correction factor to determine their corrected time. The correction factor will be  $650/(550+\text{PHRF handicap})$ . The Low Point Scoring system Rule A2 of the RRS will apply. One or more races completed shall constitute a series. A yacht's score shall be the total of all her race finishes. There will be no throw-outs.

17.2. Sunday Pursuit Race will be scored in two classes: Spinnaker and Non-Spinnaker. Boats will be scored according to their class finish order.

#### **18. DISCLAIMER OF LIABILITY**

Competitors participate in the regatta at their own risk. See rule 3- Decision to Race. The Organizing Authority will not accept any liability for material damage or personal injury or death sustained in conjunction with or prior to, during or after.

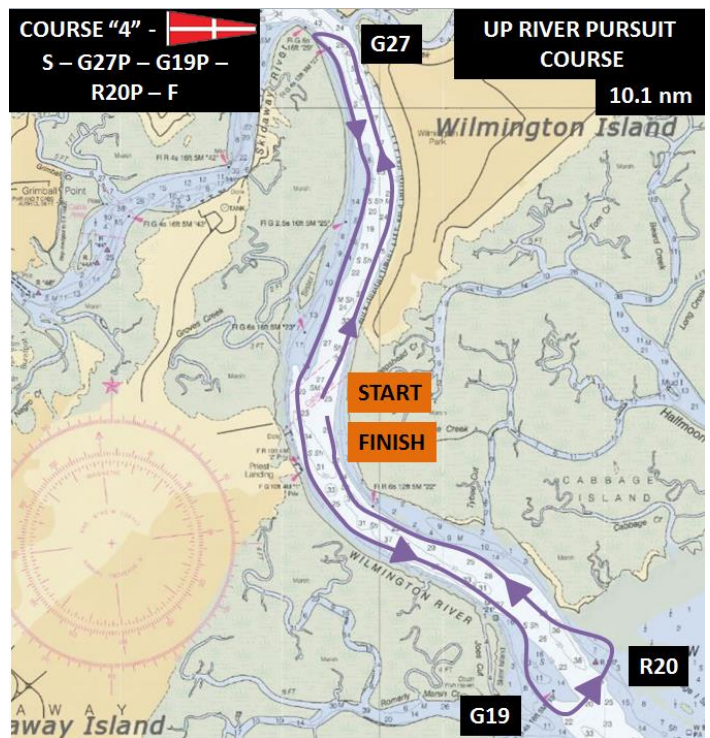
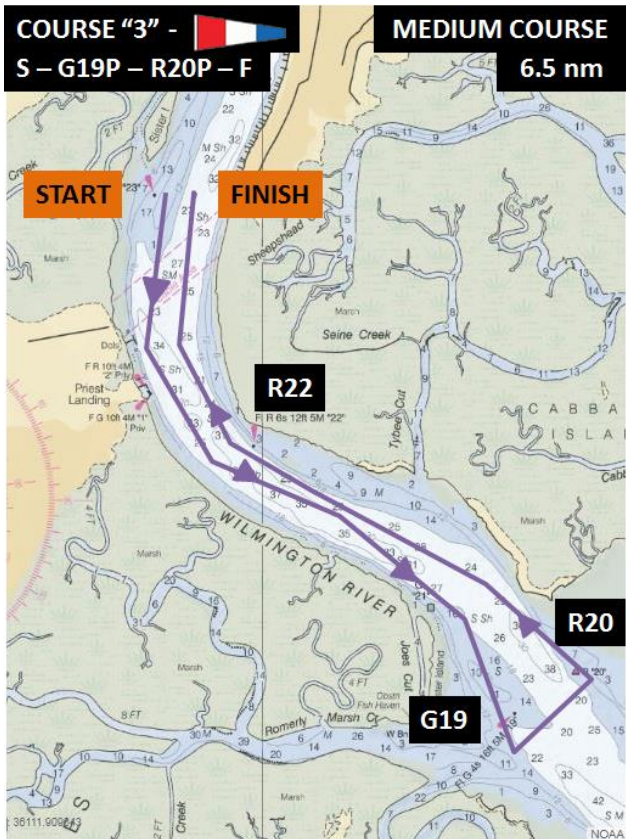
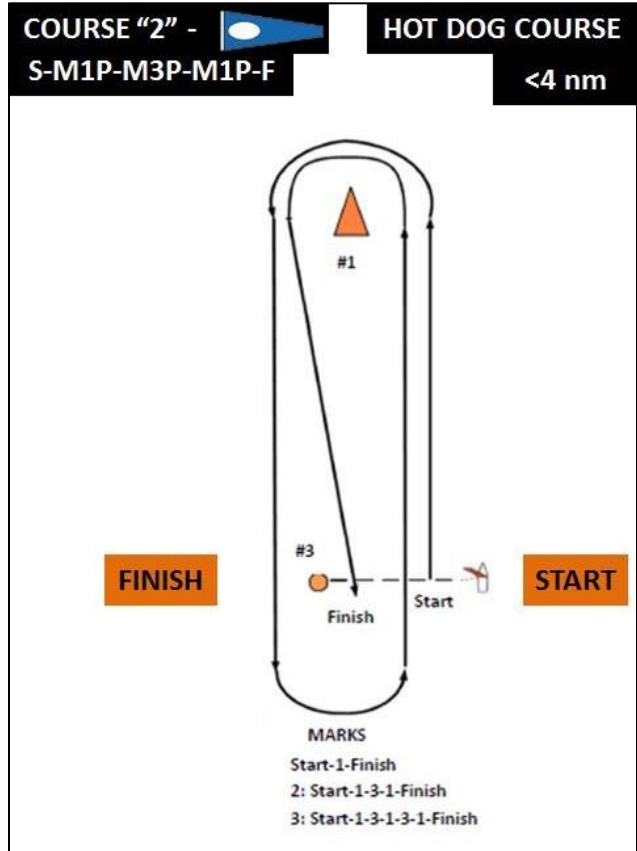
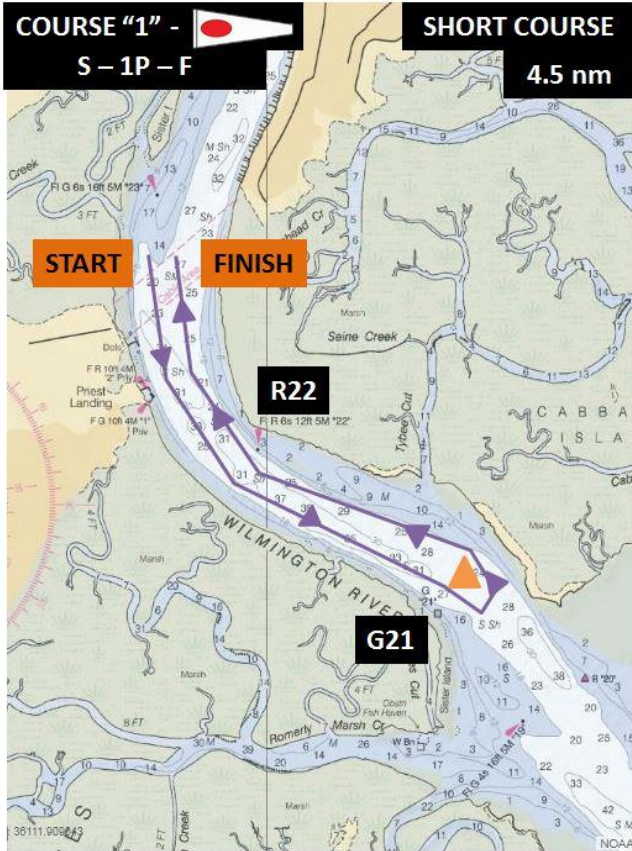
#### **19. FURTHER INFORMATION**

Regatta Chair: Angela Margolit, 973-296-8011, [amargolit@hotmail.com](mailto:amargolit@hotmail.com)

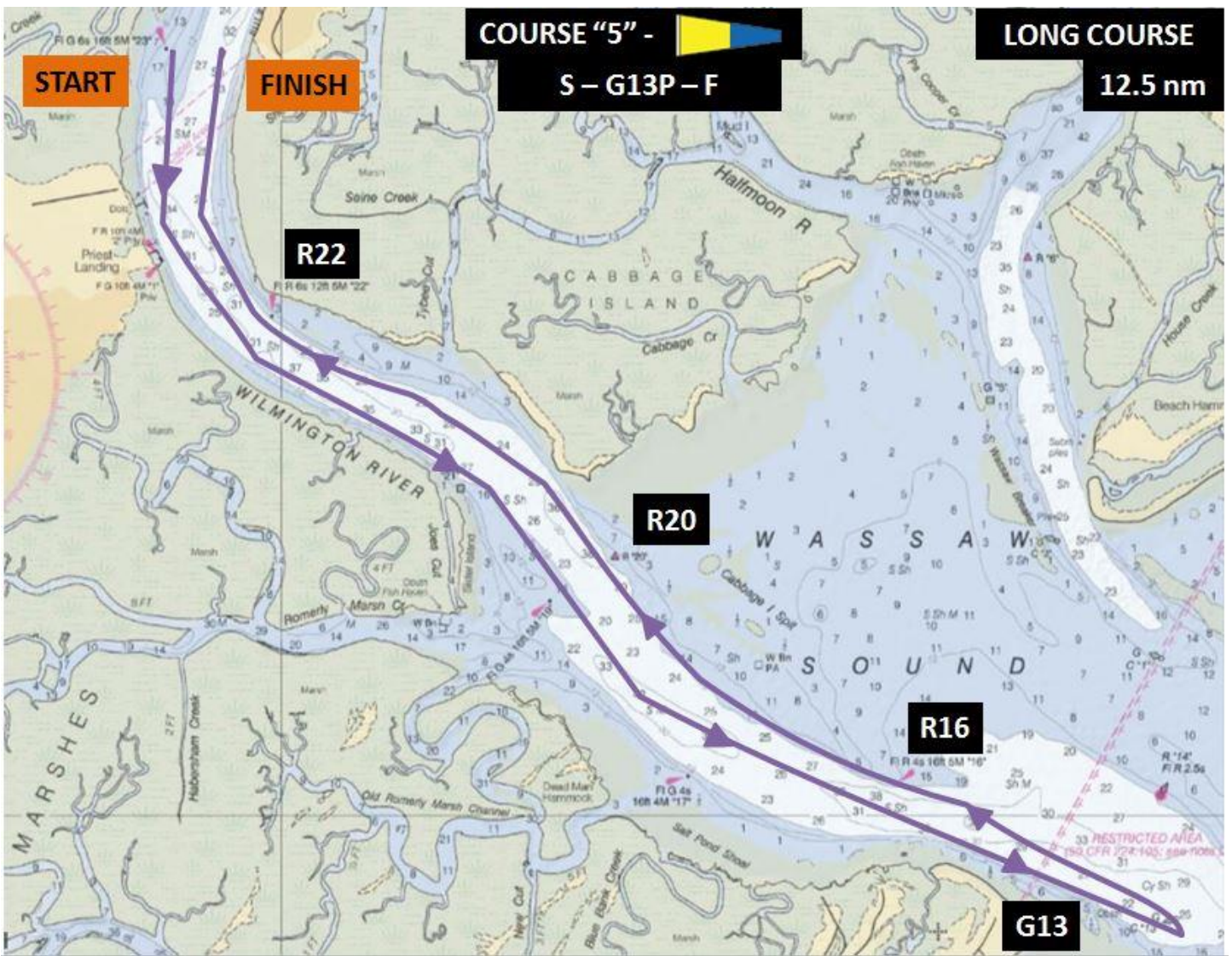
Race Officer/Chief Judge: Joleen Rasmussen, 919-369-5784, [joleenkrasmussen@gmail.com](mailto:joleenkrasmussen@gmail.com)



APPENDIX A – COURSES







**COURSE "6" -**   **ADDITIONAL WEATHER MARK AT THE START**  
**S – 1S – then see courses 1 thru 5**

**COURSE "6" -**   **ADDITIONAL WEATHER MARK AT THE START**  
**S – 1P – then see courses 1 thru 5**

