



Geechee Sailing Club

43rd ANNUAL ST. PATRICK'S REGATTA

MARCH 19 - 20, 2022

SAILING INSTRUCTIONS



1. RULES

As stated in the NOR, this regatta is governed by the "rules" as defined in the *Racing Rules of Sailing (RRS)*.

2. NOTICES TO COMPETITORS

Notice to competitors will be announced at the Competitors' meeting conference call, emailed to registered boat representative after the call and hailed over the VHF hailing channel **72** fifteen minutes prior to the scheduled start of the first race of the day.

3. CHANGES IN SAILING INSTRUCTIONS

- 3.1. Any change in the sailing instructions will be announced over VHF hailing channel fifteen minutes prior to the scheduled warning signal of the first race of the day, except that any change in the schedule of races will be emailed to a boat representative by 8:00pm on the day before it will take effect.
- 3.2. Oral changes to the SIs may be given on the water by hail from the RC Signal boat in accordance with RRS 90.2(c). The RC Signal boat will display code flag L with one sound and communicate the changes over VHF hailing channel before the next warning signal.

4. SIGNAL MADE ASHORE

- 4.1. Shore signals will be made over VHF hailing channel two hours prior to the scheduled warning signal of the first race of the day.
- 4.2. When AP is announced per 4.1, "One minute" is replaced with "not less than 60 minutes". This changes Race Signal AP.

5. SCHEDULE

Friday	7:00pm	Competitors' Meeting via Zoom Conference Call Meeting ID: 340 032 3155, Password: Savannah Dial (605) 313-4154 and use access code 464235.
Saturday	11:30am	Warning Signal for Race 1
Sunday	11:30am	Warning Signal for Pursuit Race

6. CLASS Flags

- 6.1. PHRF Class A – Spinnaker equipped boats – Yellow flag
- 6.2. PHRF Class B – Non spinnaker equipped boats – Pink flag
- 6.3. PHRF Class C – Cruising boats – White flag
- 6.4. One Design Class (J/24) – Purple flag

6.5. Additional Class flags may be assigned at the Competitors' Meeting and announced as a change to the SI.

7. RACING AREA

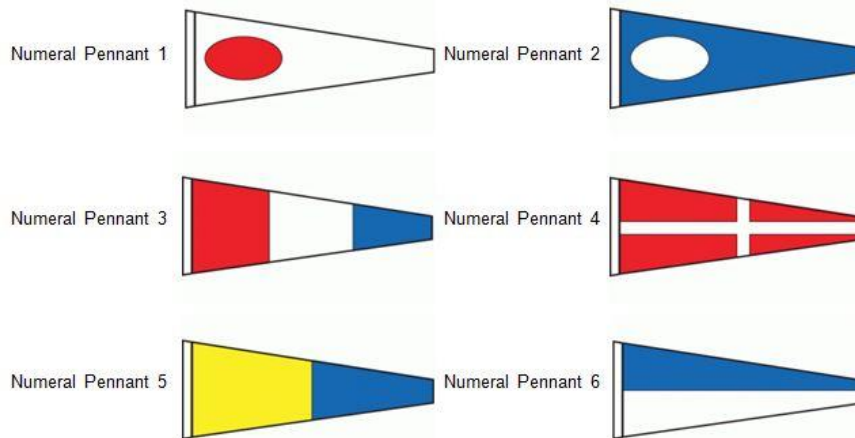
The racing area will be the Wilmington River, Wassaw Sound, and the Atlantic Ocean.

8. COURSES

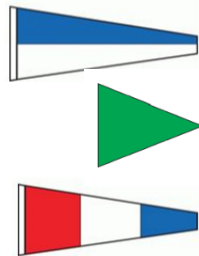
8.1. Predefined Courses are indicated by a numeral pennant as defined in Appendix A.

Course Flags

The numeric course flags are:



8.2. Race Committee may set a tetrahedron to weather of the starting line. The Race Committee shall fly Numeral Pennant 6 over Green or Red over a Course flag when a weather mark is set. Boats shall first sail to the weather mark, round the mark to starboard if **Green**, port if **Red** and then sail the designated course. This mark only applies at the start; it does not apply at the finish.



Example: "6" over "Green" over "3"
1-1**S**-G19P-R20P-F

8.3. Race Committee may hail the course over the hailing channel prior to the Warning single for the race and may post the course on the course board on the signal boat. .

8.4. For the Pursuit race, the course to be sailed and the calculated start times for all boats will be posted on the event web site by 9pm on Saturday, prior to the Sunday race day.

9. MARKS

9.1. Start and Finish Pins will be Orange Hippity Hops. Rounding marks, if used, will be Orange or Yellow Tetrahedrons.

9.2. Government marks, other than rounding marks, shall be honored and passed on their required side.

10. THE START

- 10.1. As a courtesy to competitors, Race Committee may announce the starting sequence over the VHF hailing channel.
- 10.2. Before the Warning Signal of the first race each day, boats intending to race shall check in by sailing past the stern of the Signal Boat hailing their sail number. RC may also accept check-ins over VHF hailing channel. [DP]
- 10.3. The starting line will be between a staff displaying an orange flag on the Signal Boat and the starting mark.

11. THE PURSUIT START

- 11.1. SI 10 (The Start) applies.
- 11.2. This shall be a pursuit race with a reverse PHRF handicap starting order. The boat with the slowest rating shall start first and the boat with the fastest rating shall start last.
- 11.3. The race shall use GPS time synchronization. The start times for all boats shall be based on their PHRF Time on Distance as called out on the Regatta Network Pursuit Start Sheet for Geechee Sailing Club St. Patrick's Regatta.
- 11.4. The race committee will signal the starting sequence as follows (this changes RRS 26):
 - 11:30 Warning signal for all boats – Raise Geechee Burgee with one (1) sound
 - 11:31 Preparatory signal for the first boat to start – Signal flag "P" with one (1) sound
 - 11:32 Lower code flag "P" with a long sound
 - 11:33 Starting signal for the first boat to start – Lower Geechee Burgee with one (1) sound.Subsequent start time(s) for remaining boats – Briefly raise Geechee Burgee with one (1) sound.
- 11.5. The race committee may attempt to broadcast a one (1) minute countdown for each starting time on the VHF Hailing Channel. Failure of the race committee to announce a start time shall not be grounds for redress.
- 11.6. For the purposes of the definition of "racing," each boat's preparatory signal shall be four (4) minutes prior to their scheduled start time.
- 11.7. After the warning signal for the first start, boats shall stay clear of the starting area until four (4) minutes before their scheduled starting time. [DP]
- 11.8. In the event a postponement is signaled on the water, Race Committee shall announce the revised start time for the first boat before lowering the postponement flag. It is a boat's responsibility to figure out their new start time.

12. THE FINISH

The finish line will be between a staff displaying a blue flag on a race committee boat and the finish mark.

13. PENALTY SYSTEM

- 13.1. RRS Appendix V Alternative Penalties shall apply.
- 13.2. A boat which runs aground may use her engine to help free her-self without improving her position as allowed by RRS 42.3(i).

14. TIME LIMITS

- 14.1. The time limit for the Saturday PHRF/One Design races will be two hours. Any boat finishing more than 45 minutes behind the second boat to finish in their fleet will be scored Time Limit Expired (TLE) and scored points for the finishing place one more than the number of boats that did sail the course and finish the race without a hearing. This changes RRS 35, A4, A5, and A11.
- 14.2. The Time Limit for the Pursuit Race is four hours.

15. RETIREMENT

When possible, a retiring boat shall notify Race Committee over the VHF hailing channel. [DP]

16. PROTESTS

- 16.1. Promptly after finishing or retiring, any boat intending to protest shall notify Race Committee. This changes RRS 61.1
- 16.2. The Protest Time Limit is 30 minutes after the Signal Boat docks and will be announced over the VHF hailing channel.
- 16.3. Protest shall be delivered in hardcopy to the docked Race Committee signal boat. Protests can be submitted via the US Sailing Racing Rules App emailed to joleen@lrcrafts.com. Protests can also be photographed and then emailed to same or texted 919-369-5784.
- 16.4. Arbitration as described in US Sailing RRS Appendix T may be offered.
- 16.5. Protests will be heard in approximately the order of receipt as soon as possible.
- 16.6. Protest Notice will be announced over VHF hailing channel within 10 minutes after the Protest Time limit to inform competitors where and when there is a hearing.

17. SCORING

- 17.1. Saturday PHRF/One design races will use Time on Time handicapping. Each boat's elapsed time will be multiplied by a correction factor to determine their corrected time. The correction factor will be $650/(550+\text{PHRF handicap})$. The boat with the lowest corrected time in each class will be the winner. The Low Point Scoring system Rule A2 of the RRS will apply. One or more races completed shall constitute a series. A yacht's score shall be the total of all her race finishes. There will be no throw-outs.
- 17.2. Sunday Pursuit Race: boats will be scored according to their finish order.

18. DISCLAIMER OF LIABILITY

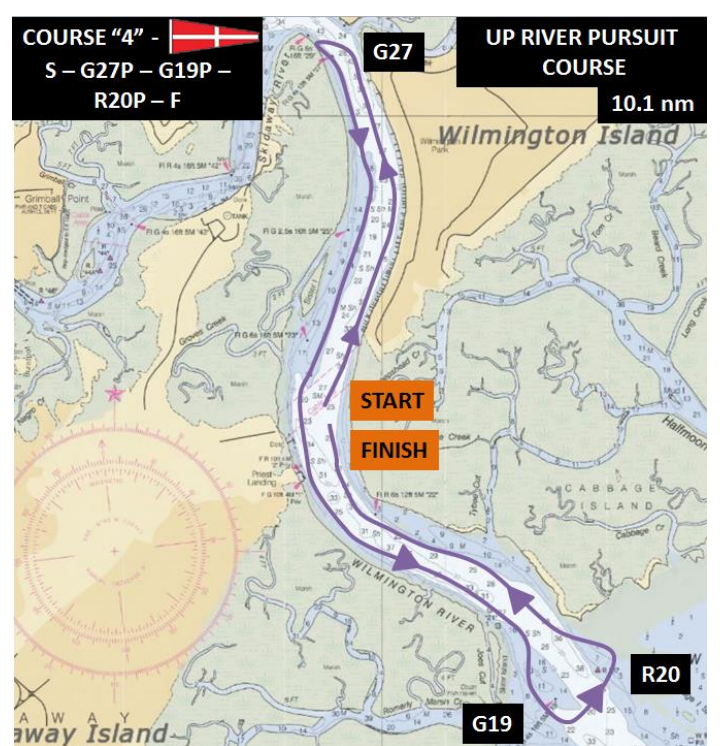
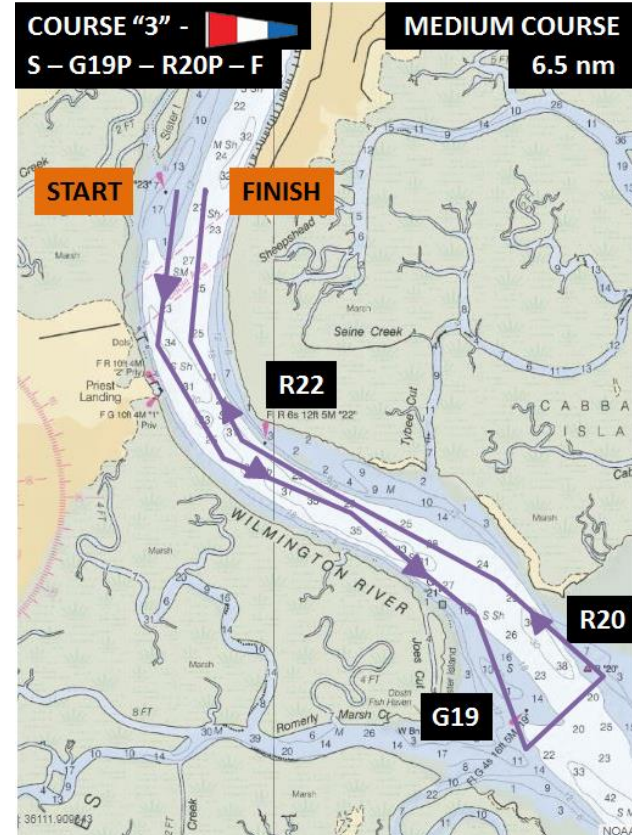
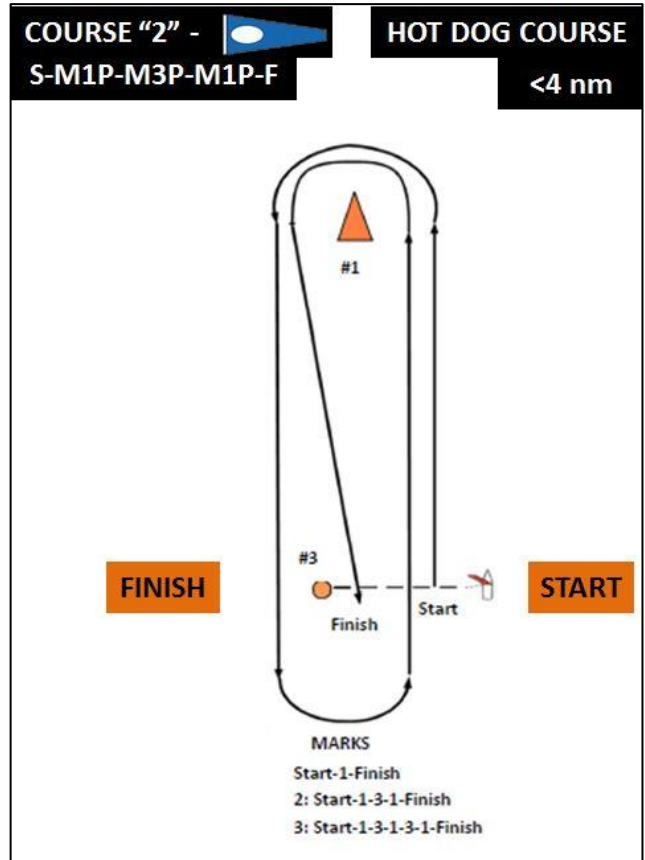
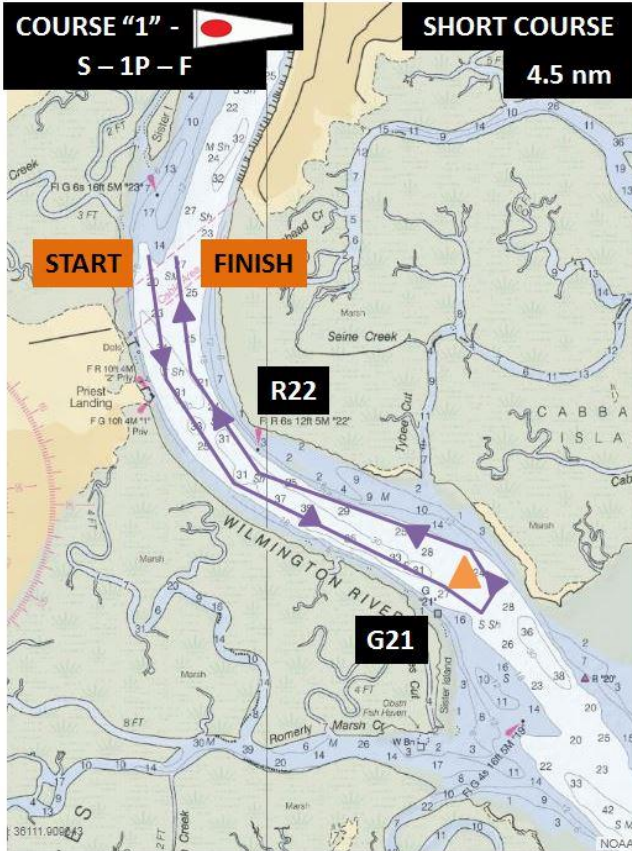
Competitors participate in the regatta at their own risk. See rule 3- Decision to Race. The Organizing Authority will not accept any liability for material damage or personal injury or death sustained in conjunction with or prior to, during or after

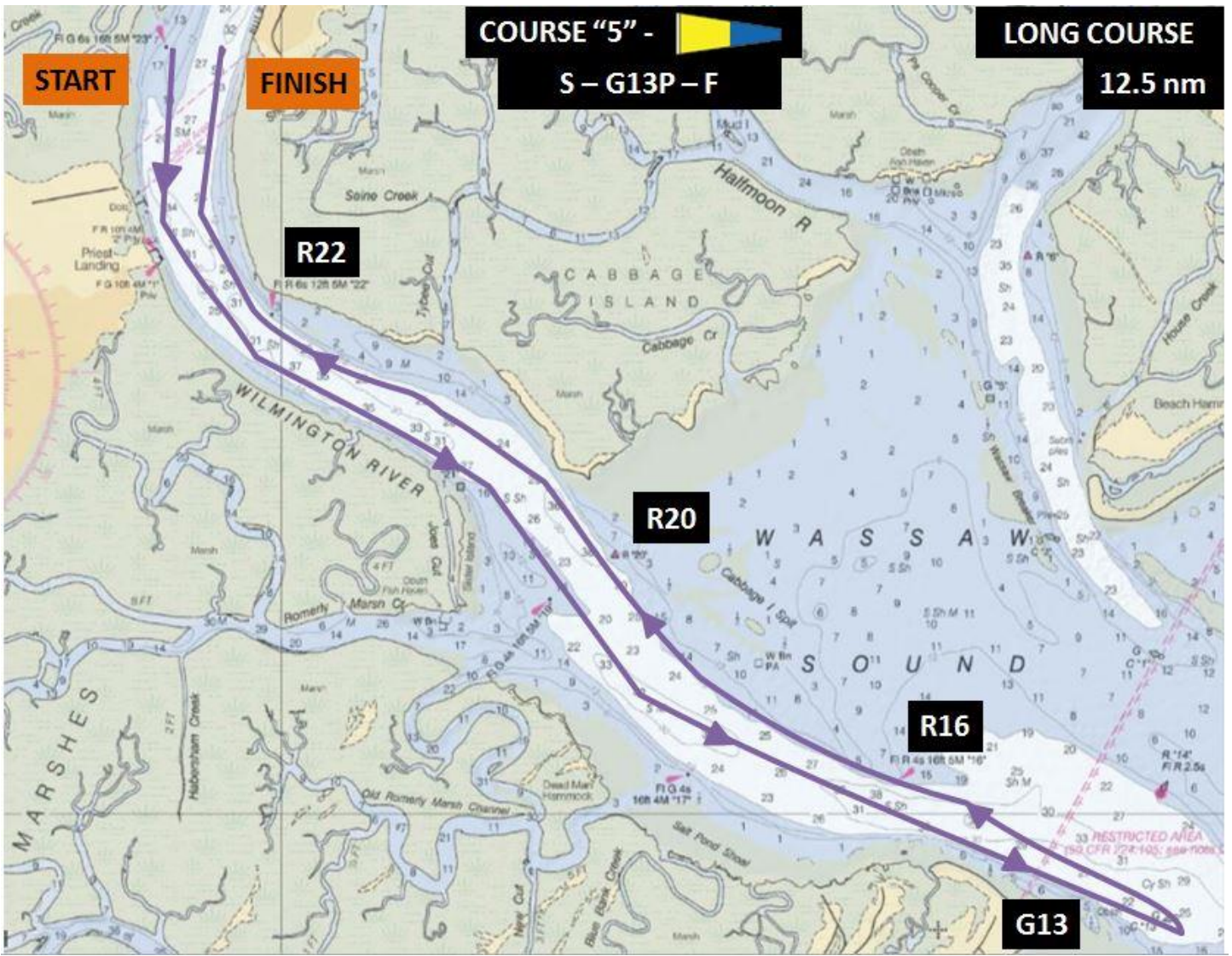
19. FURTHER INFORMATION

Regatta Chair: Angela Margolit, 973-296-8011, amargolit@hotmail.com

Principal Race Officer/Chief Judge: Joleen Rasmussen, 919-369-5784, joleen@lrcrafts.com

APPENDIX A – COURSES





COURSE "6" -  

S – 1S – then see courses 1 thru 5

ADDITIONAL WEATHER MARK AT THE START

COURSE "6" -  

S – 1P – then see courses 1 thru 5

ADDITIONAL WEATHER MARK AT THE START

