



## COMMODORE, Larry Sprague

The boating season has arrived! Tax returns are filed (or extended), taxes are paid, and anything left over can be spent on the boat!

Mary Ellen and I took our two oldest children to the Jimmy Buffett concert last week. We had a great time. Jimmy Buffett puts on a great show. The amazing thing is that he has been doing this for decades, yet he seemed to genuinely enjoy performing. He also tailored his show to Savannah both in some of the video and in the words to his songs. Jimmy Buffett is proof that if you enjoy what you are doing, it is not "work" and it doesn't get old.

I enjoy working on my boat. For the most part I

do not consider it work. Or to put it another way, I find it preferable to working. Nevertheless, I would rather sail than polish or paint. There are still areas of maintenance, both mechanical or electrical, that I am afraid to tackle. It seems that if I do not already know what I am doing, I end up taking the problem to a mechanic anyway. Maybe I just do not have the patience (or courage) to keep trying until it is either fixed or broken.

Then there are the weird things that suddenly occur. For instance, last weekend, on the second day of our overnight, I suddenly noticed that the Garmin GPS heading was approximately 60° different than the magnetic

heading. What! How? The boat icon was in the correct position, but the direction was totally off. Turning the Garmin on and off did not fix the problem. There goes another afternoon, searching the internet, watching videos and trying to contact Garmin. The good news is, I really don't need the GPS heading. I have sailed these waters for decades without it, so I can still use the boat. Still aggravating, aggravating, aggravating!

See you on the water.  
Fair winds and following seas.



**MEETINGS:**  
Every second Monday of the month at Carey Hilliard's,  
**3316 Skidaway Rd.**  
**Order dinner at 6:00; meeting at 7:00.**

### WEBSITE:

[www.geecheesailingclub.org](http://www.geecheesailingclub.org)

### EMAIL ADDRESS:

[geecheesailingclub@hotmail.com](mailto:geecheesailingclub@hotmail.com)

### FACEBOOK:

Geechee Sailing Club

## **GEECHEE SAILING CLUB'S** **UPCOMING PARTIES** **& CRUISES**

### Socials:

*July ? - Jimmy Buffett party*

*November 11 - Change of Watch, Savannah Yacht Club*

### Cruises:

*May 28-30 - Cruise to south end of Wassaw Island*

*June 24-26 - North end of St. Catherine's*

*July 16-17 - Herb Creek?*

*August 13-15 - Daufuskie (Formerly Marshside Mama's)*

*Sept. 3-5 - Safe Harbor Marina, Beaufort (See page 4 for further details)*

*Oct. 14-16 - Beaufort Water Festival (See page 2 for further details)*

## **THE SPEAKER FOR THIS MONTH** **(MAY 9th) IS MIKE SULLIVAN** **WITH THE SKIDAWAY INSTITUTE OF OCEANOGRAPHY**

*Do you know how diversified the institute is? Do you know its history?  
Don't miss Mike's show & tell!*



## CRUISE CHAIR, Larry Sprague

We have decided to change our Labor Day cruise from Hilton Head to Beaufort. It will be a three-day cruise from Saturday, September 3<sup>rd</sup> through Monday, September 5<sup>th</sup>. Given that it is a holiday weekend, the Dock Master suggested that people go ahead and make reservations. Make reservations if you have any possibility of going. (843/524-4422). In addition to the docks, Beaufort also has mooring buoys available. (See page 4 for more details.)

The next cruise will be the Memorial Day cruise to the south end of Wassaw Island, anchoring near the DNR dock. Mary Ellen and I will be in Boston with our new granddaughter, so Dawson will be the lead boat for this cruise. In the past, we have gathered for cocktails and the brunch on the DNR dock. Bring chairs, and we will need some small tables. So far, the DNR has not disturbed our gatherings.

Owning a boat is a way for me to be constantly humiliated by my mechanical skills. Recently, my 5 HP Mercury outboard refused to run more than a minute or so. Given that it had not been run since last season, I figured

that the carburetor likely needed cleaning. I looked at a video online, and it did not look too complicated. Well, it may not be complicated, but three hours later I still could not get the engine to even sputter. I am taking the engine to my motor repair guy with my tail between my legs. Think I will stick to practicing law.

The weather has been perfect for boating. Last weekend we attempted to go to Half Moon River via the Tybee Cut. We were about an hour after high tide, but were unable to make it through. We doubled back and decided to go to Romerly Marsh Creek. We anchored about an hour before sunset. The breeze stayed up through the evening, so the sand gnats were not bothersome. The temperature was perfect and we were the only ones in the area. It is amazing how close to Savannah one can find some solitude. We definitely need to do more of this.

### **Following is the cruise calendar for 2022**

**May 28<sup>th</sup>-30<sup>th</sup>** – Memorial Day Weekend- South End of Wassaw (Saturday-Monday)

**June 24<sup>th</sup>-26<sup>th</sup>** –North end of St. Catherine's (Friday-Sunday)

**July 16<sup>th</sup>-17<sup>th</sup>** - Herb Creek?

**August 13<sup>th</sup>-15<sup>th</sup>** – Daufuskie (Formerly Marshside Mama's)

**September 3<sup>rd</sup>-5<sup>th</sup>** – Labor Day – Beaufort Safe Harbor Marina (Saturday-Monday). Or **Sept. 2-5** (Friday-Monday) depending on your plans.

**October 14<sup>th</sup>-16<sup>th</sup>** – Bluffton Arts Festival (Oct 15<sup>th</sup>-23<sup>rd</sup>). Friday night at Freeport Marina or in creek across the river from the marina (Friday-Sunday).

**I will be bringing some of each to our meetings. If you want to give me an idea in advance of how many, you can call or text me (Linda Howard, 658-7398). Everyone loves them, so you won't be disappointed. The bottles are \$10/each and the mugs are \$12.**



## VICE COMMODORE, Linda Howard

An email was sent out on this subject. Here it is again . Please note that you must make your own reservation ASAP.

In the past, many in our club would head to Harbour Town every Labor Day weekend where we would try to find a place to eat a covered dish supper (heavy hors d'oeuvres) Saturday night and a brunch Sunday morning. Generally, we would eat under the large oak tree. Now, however, it is roped off for only patrons of the fish taco truck. After brunch on Sunday we would ride our bikes to South Beach and enjoy the beach or have lunch. Along the way, we would stop at "The Tree" to have our picture taken. There were so many of us! But last year there were only 7 of us, and only 4 rode their bikes to South Beach, turning around almost immediately because everyone there (it was crowded) was vying for shade! It was hot! We DID get our picture taken, however, at a different tree (actually in Harbour Town itself).

A few of us would get there on Friday night instead of Saturday and eat at the Crazy Crab, but it would have a long waiting list. Being a tourist destination, Labor Day tends to be quite crowded. On Saturday we would walk or ride our bikes around, but there wasn't much to see except shops and condos.

I called Harbour Town Monday and talked to Leslie. They have gone up on their prices. Here is what she told me:

\$3.75/ft. per day

\$.50/ft. per day for 50 amp

\$.30/ft. per day for 30 amp

\$7/day for Resort Fee

Then Tommy and I were talking about how the club used to go to Beaufort and had such a wonderful time (only a 6-hour trip up the ICW). I called them; it is Safe Harbor Marina now and their rates are:

\$2.35/ft. per day

\$18/day for 50 amp

\$12/day for 30 amp

Therefore...I made a motion in the Board meeting to change "The Traditional Harbour Town Labor Day Cruise" to "The Traditional Beaufort Labor Day Cruise." Here are the reasons.

- Less expensive
- Only a 6-hour trip via the ICW. And those who don't go by boat can drive to meet us with their bikes (and food). 8>)
- Has a beautiful waterfront park (see below)
- Has a very nice un-crowded place for us to eat
- Is a very nice, clean marina and has all the amenities (electricity, water, pump-out, wi-fi, showers, laundry) [Safe Harbor Beaufort - Safe Harbor Marinas \(shmarinas.com\)](http://shmarinas.com)
- There are restaurants and shopping within walking distance
- The Spanish Moss Trail is amazing. See link. It is 12 ft. wide, 10 miles long, and is paved. It is accessible for bikes, skates, etc., is open to pets on leashes, has 6 parking trailheads, has two restroom/port-a-potty facilities along the way, and has a Parker's convenience store also along the way. It has water, marsh, and wildlife viewing, as well as tree-lined neighborhoods and historic buildings. Personally, I really like the sound of this since I had refused the past few years to ride the narrow path to South Beach. It seemed like every year someone got hurt.

[Trail Map \(spanishmosstrail.com\)](http://spanishmosstrail.com). We can also bike through the historic district with its antebellum houses which is close to the marina.

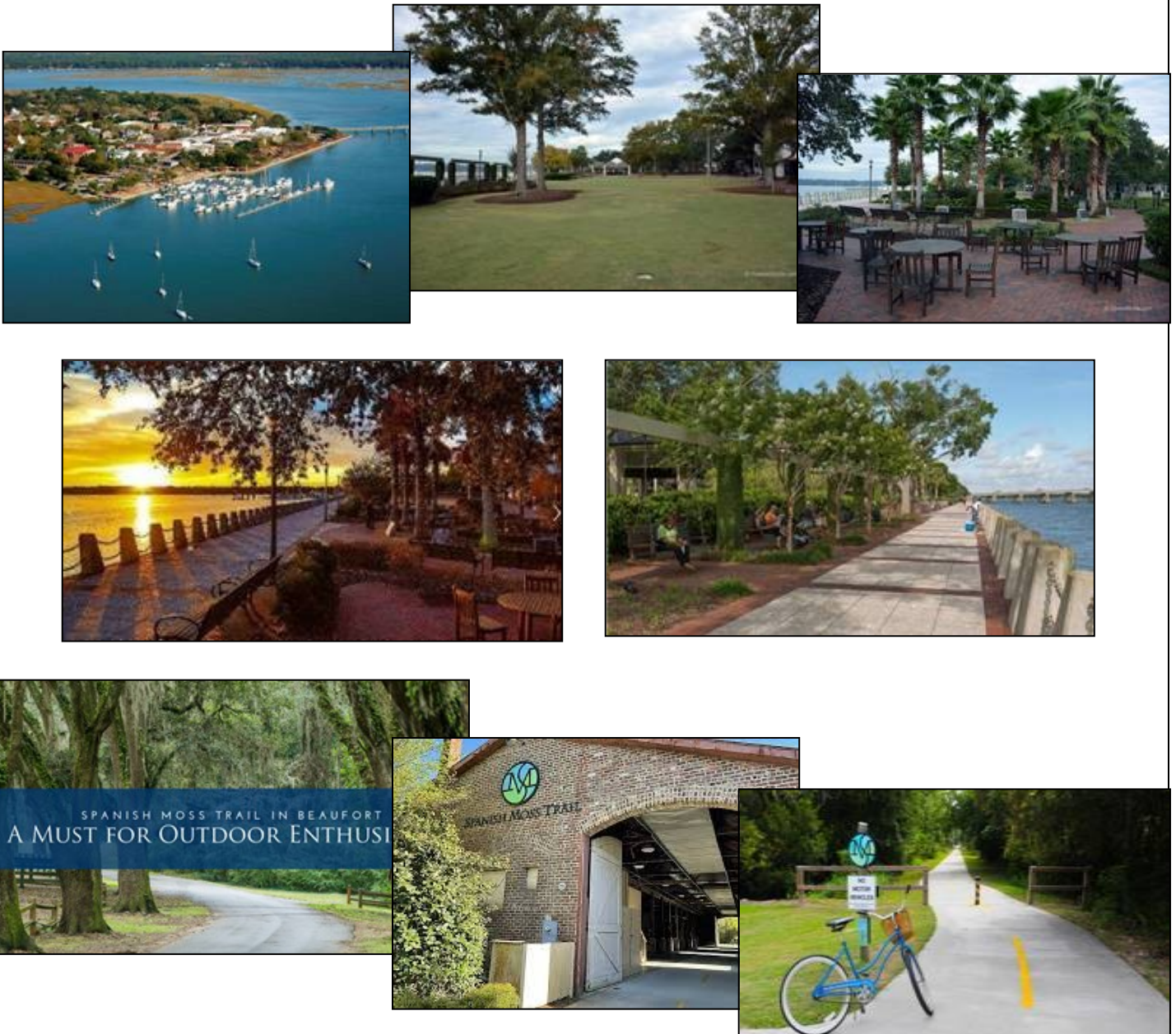


I called and talked to a Tony at Safe Harbor today (843/524-4422) about us coming Labor Day weekend. I told him maybe 6-8 boats as a guess and that we would be there Saturday, September 3 and Sunday, September 4 (leaving on Labor Day - the 5th). (We will probably go Friday since we won't have to work.) He said there would not be a problem for the 3rd, but the 4th may be tight. He said that each person needs to make their own reservations **AND MAKE IT ASAP**. He said you can call there and talk to anyone and they will get you reserved, or you can go on [Dockwa | Marina dock, slip, and mooring reservations made simple](#). He said they will be happy to help you on the phone if you don't want to do it online. They will charge your card to hold your reservation, BUT will give you full refund if you cancel - with no penalty fees. They just ask that you let them know as soon as possible.

P.S. We had not planned a club cruise to Harbour Town for the July 4 weekend, but individuals who want to visit Harbour Town may want to go then.

P.P.S We are changing the cruise to Beaufort that was planned for July 16-17 to a cruise, possibly to Herb Creek. Larry will let us know.

P.P.P.S Friday, Sept. 2 is their "First Friday After Five." From 5:00-8:00 p.m. their stores, galleries, and restaurants in historic Beaufort are open with live music, etc.



## VICE COMMODORE, Linda Howard (cont'd)

Our speaker in April was our own AJ Goldman who wowed us with his recounting of the solo trip he took in June 2010 from San Francisco to Hanalei Bay, Kauai, Hawaii, a race that was part of the "Single-Handed Transpac Race". It took him 21 days, 9 hours, and 17 minutes at sea. AJ told of the preparation, the training, the qualifying race, and the many aspects of offshore solo sailing (electrical systems, sail selection, repairs, rigging, medical and safety, provisioning, and weather tactics).

Beyond that, though, he was so animated and enthusiastic that I told him I felt as though I had crossed the ocean with him. We were all hanging on by our fingernails. If you missed it, you missed a classic.

(AJ is Chair of the Math Department at Savannah Country Day School.)



## MAY'S SPEAKER

### MIKE SULLIVAN OF THE SKIDAWAY INSTITUTE OF OCEANOGRAPHY

Michael Sullivan has been the External Affairs Manager at the Skidaway Institute of Oceanography since June 2005. He is responsible for communications, public relations, and governmental relations. Previously, he handled public and media relations for Georgia Southern University.

Most of his career was spent as a TV News Director at local stations around the SE. He was the News Director at WTOG-TV in Savannah from 1992-2000.

Michael is a graduate of the University of Florida, is married, has two adult children, and lives on Wilmington Island. I can tell that he will keep you entertained.

## SECRETARY/TREASURER, Dawson Long

I am sorry that I missed the first cruise of the year. However, I did happen to get out on the water this weekend with family and friends. The great news is that nothing is broken on the boat this year.

There were many boats out on the water last weekend. Hopefully, we will have many more days as beautiful as last Saturday and Sunday. Please be encouraged to go on some of the upcoming distant cruises to places like Beaufort. I like when more people attend cruises for the reason that a part of my personality enjoys fellowship. I also have selfish reasons for more people to participate, because there are likely more support boats in case I need help.

Thank you for inviting me onto your boat on these cruises. You may notice that I may inspect your stern cleats to check your ability to tow me. In boating, a friend in need is a friend indeed. I have been that in-need friend indeed. Thank all of you who have helped me in the past with your experience, your beer, and your towing capacity. When I get that newer, bigger, nicer, faster boat, I will return the favor.

The Geechee Sailing Club has plenty of money in the checking: \$4,085.98 The savings account in Vanguard is valued at \$18,323.15. It is always good summing up on a high note.





## MEMBERSHIP CHAIR, Georgia Byrd

### Consider donating instead of selling your boat!

The Mars family is best known for their rich and chocolaty candy treats. However, I had the opportunity to learn more about their beautiful Feadship, *Kisses*, years ago when they opted to donate the yacht through the services of Block Island Maritime based in New England.

Delivered to the family new in 2000, *Kisses* proved to be one of the most iconic yachts in the world. Accommodating 14 guests and a crew of 11, she was a frequent guest at Thunderbolt Marine in Savannah, and many of you may have caught her profile by boat or car.

At the time of her launching, *Kisses* was in the top 10 percent by LOA in the world. She was one of only 170 motor yachts in the 50-55m size range and, compared to similarly sized motor yachts, her volume was 118.05 GT above the average. One would never suspect a yacht of her caliber would, or could be donated. However, as we all know, with age, boats require constant maintenance, and this one was becoming rustier with each day.

The donation process for *Kisses* was a dream for the sellers. And after walking through the steps and taking notes, I learned that not only does a donation benefit sellers who don't have the time or motivation to stage and prep their boat for sale, but it takes the headache out of brokerage listings, showings, and "benefits causes" that are close to the owners' philanthropic channels. But let's not forget the main advantage: donating your boat can also be an attractive tax benefit.

For Block Island Maritime, the mission is to support various marine non-profits through grants funded by boat donations. In turn, Block Island then charters the donated boats for three years, with an option

for a prospective owner to purchase at the end of that time. Those who charter have an advantage (pending a credit check). They are able to utilize the boat with a three-year financing option, giving them time to secure financing for the boat, if needed.

But why would an owner like yourself decide to donate your boat? There are several reasons:

--Boats on the market for more than 45 days begin to lose value.

--The expenses of storage, maintenance, insurance, brokerage fees and possible expensive repairs continue when a boat is listed for sale.

--Upon donation, all costs to the owner cease and immediately become the responsibility of Block Island Maritime Funding (BIMF) or any other donation outlet.

--In some cases, the return on a charitable contribution of a boat can be close to the actual selling price, particularly in a weak market.

--Boat donors have the option of selecting from a number of Block Island's client charities to which they can allocate the proceeds of their boat donation.

To start the process, a simple valuation will be performed at the expense of Block Island Maritime. Then the boat owners select the charity that would benefit from the funds.

Once the valuation is completed by a third-party marine surveyor, the donor (either as an individual or couple filing jointly) can take the appraised value as a charitable deduction in the year in which it is donated.

There are numerous donation outlets within the U.S. For more information or if you have a boat for sale that you would like to donate, I'm happy to share my knowledge to ease the trans-

fer of your boat without the headaches of the sometimes lengthy sales process.



## COMMUNICATIONS CHAIR, Linda Howard

The nonprofit arm of BoatUS, The BoatUS Foundation for Boating Safety, provides education for boaters for the purpose of “reducing accidents and fatalities, increasing stewardship of America’s waterways, and keeping boating safe for all.” There are 336 free online courses at [boatus.org/courses](http://boatus.org/courses). There’s something for everyone.

Here is a look at the top 10 questions students answer incorrectly on a variety of course tests. How well do you think you know the answers? (Answers are on page 8.)

1. Air moves from \_\_\_\_ to \_\_\_\_\_.
  - A. East to West
  - B. High to low-pressure areas
  - C. Low to high-pressure areas
  - D. Land to water
2. One desirable feature of LPG is that it liquefies at a relatively low pressure, allowing low-cost tanks to contain a large amount of energy because liquid is much denser than gas.
  - A. True
  - B. False
3. The “Q” flag used for foreign port entry means:
  - A. We need immediate medical attention.
  - B. Vessel is healthy, request approval to enter.
  - C. We have no pets aboard.
  - D. We have nothing to declare.
4. AIS uses VHF radio frequencies to broadcast the AIS information.
  - A. True
  - B. False
5. The difference between compass variation and deviation is:
  - A. Variation is caused by the effects of the magnetic properties of the vessel, where deviation is caused by the misalignment of the magnetic lines of force with the meridians of longitude.

B. Variation is caused by the misalignment of the magnetic lines of force with the meridians of longitude, where deviation is caused by the effects of the magnetic properties of the vessel.

C. Variation depends upon the vessel’s location; deviation depends upon the vessel’s heading.

D. There is no difference.

6. It make little difference whether statute miles or nautical miles are selected during setup of the GPS because they are very similar.

A. True

B. False

7. What does a Cunningham do?

A. Changes the location of draft by the mainsail.

B. Changes the amount of draft in the mainsail.

C. Secures the mainsail tack to the mast.

D. Affects the amount of twist in the mainsail.

8. Match the VHF channel descriptions:

A. Channel 16 \_\_\_\_\_

B. Channel 9 \_\_\_\_\_

C. Channels 8, 69, 71, 72, & 78 \_\_\_\_\_

D. Channel 6 \_\_\_\_\_

E. Channel 13 \_\_\_\_\_

F. Channel WX2 \_\_\_\_\_

1. Weather information

2. Ship-to-ship safety

3. Navigation safety; ship-to-ship, locks, bridges

4. Alternate hailing channel

5. Primary hailing channel; emergency, distress

6. Working channels for recreational boaters

9. Which of the following will increase the effects of alcohol and drugs when boating:

A. Vibration

B. Food

C. Spray

D. Temperature

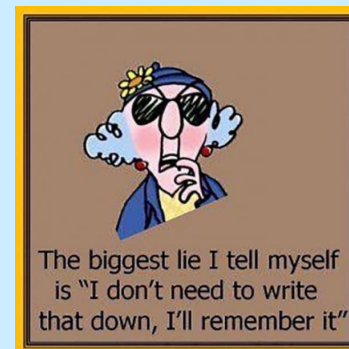
10. When power-driven vessels are in sight of one another and meeting or crossing at a distance within half a mile of each other, each vessel must use sound signals. What do two short horn blasts from another vessel mean in a meeting situation?

A. They intend to pass starboard side.

B. They intend to pass port side to port side.

C. They intend to maintain course and speed.

D. They intend to immediately stop and reverse engines.



I tried the Japanese method of de-cluttering where you hold every object that you own and, if it does not bring you joy, you throw it away.

So far I have thrown out all of the vegetables, my bra, the electric bill, the scale, a mirror, and my treadmill.

## COMMUNICATIONS CHAIR, Linda Howard (continued)

### ANSWER KEY:

1. B. High-to-low-pressure areas. The uneven heating of the earth's surface by the sun creates different pressure areas that cause air to move - the wind to blow.

2. True. Also of value is that the vapor which forms in the top of the tank is drawn off as a gas, which is easier to ignite than a liquid like gasoline.

3. B. Vessel is healthy; request approval to enter (also known as "free pratique").

4. True. AIS uses the VHF frequencies 161.975 MHz and 12.025 MHz to broadcast and receive the AIS information.

5. B. Variation is caused by the misalignment of the magnetic lines of force with the meridians of longitude, whereas deviation is caused by the effects of the magnetic properties of the vessel. Variation depends upon the vessel's location; deviation depends upon the vessel's heading. Number of students incorrectly answering is about evenly split between A and C.

6. False. The nautical mile represents a distance that is about 15% greater than the statute mile. This difference is significant, particularly when navigating close to shore in conditions of reduced visibility, such as fog.

7. B. The Cunningham changes the location of draft in the mainsail.

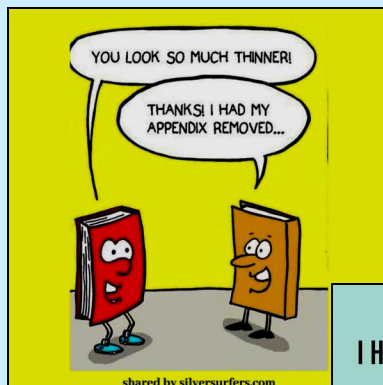
8. A.5, B.4, C.6, D.2, E.3, F.1.

9. A. People often choose temperature, thinking it means "heat." They will argue with us endlessly, though the course specifically mentions boater fatigue in relationship to engine noise and vibration.

10. A. Two short horn blasts from another vessel means that they intend to pass starboard side to starboard side.

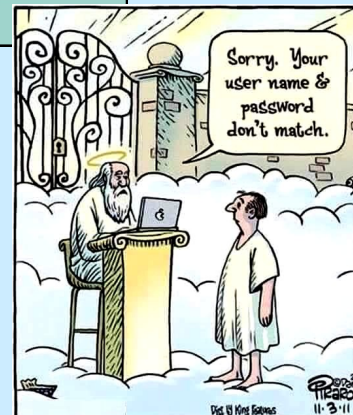
## SOCIAL CHAIR, Mary Ellen Sprague

Calling all Geechees! The Social Committee is planning a Jimmy Buffett party in July at 1811 Chatham Avenue, Tybee. Grab your Hawaiian shirts and hula skirts and join us for a Cheeseburger in Paradise!



**I HATE having a messy house.**

Not enough to actually clean it, but enough to give it a really disgusted stare from my seat on the couch.





## RACE CHAIR, Angela Margolit

One of the larger regional regattas, the Wassaw Cup, will be held May 14-15. This is the third of eight regattas for the SAYRA PHRF Offshore Championship Series, of which our St. Patrick's Regatta was the first. A low country boil will be held that Saturday evening.

The registration fee of \$75 includes:  
 two days of racing  
 coffee & pastries Saturday and Sunday morning  
 two dinner tickets and complimentary beer on Saturday  
 awards ceremony with beer and

heavy hors-de-oeuvres on Sunday

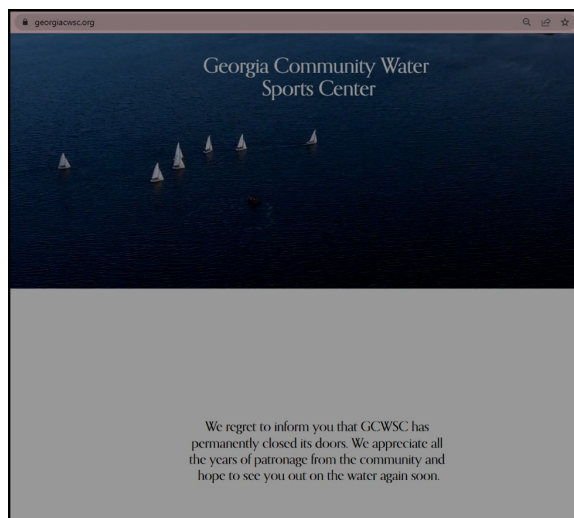
Yours truly is already registered with a J/24. To register your boat, go to <https://www.regattanetwork.com/event/24465>

Two other exciting regattas take place in May: on the 20<sup>th</sup> and 21<sup>st</sup> is the CORA/CSC Savannah Cup (Charleston to Savannah overnight). Then on May 27-29 is the HRYC (Halifax River Yacht Club) Gulf-Streamer Offshore Challenge, Daytona to Charleston (another over-

nighter). If you have the boat and just need crew, let me know!

The Worrell 1000 is back in action! This beach catamaran sailboat race starts in Hollywood, FL, on May 9. The racers will arrive at Tybee Beach on Friday the 13<sup>th</sup>. The following day is a "lay day" so you can come by the Hotel Tybee and see the catamarans on the beach! Then they leave on Sunday for Folly Beach, SC. For more info, visit: <https://worrell1000race.com/>

I am sad to report that the Savannah Sailing Center is closing its doors! I talked to Carrie Rohde at the SYC on April 14<sup>th</sup> about this. She said that they couldn't find instructors. Such a shame. Per their website, see →



**THESE ARE PHOTOS FROM OUR ST. PATRICK'S REGATTA AND AWARDS GATHERING AFTERWARDS. I (Linda Howard) NEGLECTED TO PUT THESE IN APRIL'S RHUMB LINE:**







## FLOTSAM AND JETSAM

Unscramble each word, then take the letters that are underlined and unscramble them to come up with the last name of one of our members:

T Y A N I V

— — — —

L E B A T

D D E I R L

T E R A C

Answers to April's Scramble:    **G O U G H**

**BAGGAGE**

**ENOUGH**

**HINDER**

**LOOSE**

## SUPPORT FOR OUR MEMBERS

This column is for club members to support other members "in need" (phone calls, visits, prayers, meals, etc.). Let me know of anyone you want to add. I won't go into a lot of detail on each here, but you can call them. I will also get approval before entering any names into this column. Please text me at 658-7398.

- Linda Meyer: Began radiation April 13.
- Georgia Byrd's hip surgery was April 8th.
- Linda Howard with post back surgery issues.
- Tommy Howard had back surgery April 13.

## 2022 OFFICERS

**Commodore ..... Larry Sprague**  
**Vice Commodore .....Linda Howard**  
**Secretary ..... Dawson Long**  
**Treasurer..... Dawson Long**  
**Past Commodore.....Dawson Long**  
**Social Chair ..... Mary Ellen Sprague**  
**Cruise Chair ..... Larry Sprague**  
**Race Chair..... Angela Margolit**  
**Membership Chair ..... Georgia Byrd**  
**Communications Chair/Editor.....Linda Howard**

For questions or comments, contact Linda Howard, Editor (912/658-7398)